

PART OF THE N.E. 1/4 OF SECTION 28, T.7N., R.1E., S.L.B. & M.

EDEN HILLS SUBDIVISION NO. 4

LOTS 62 - 81

IN WEBER COUNTY

SCALE 1" = 100'

TAXING UNIT: 317

SEE PAGE 22-1

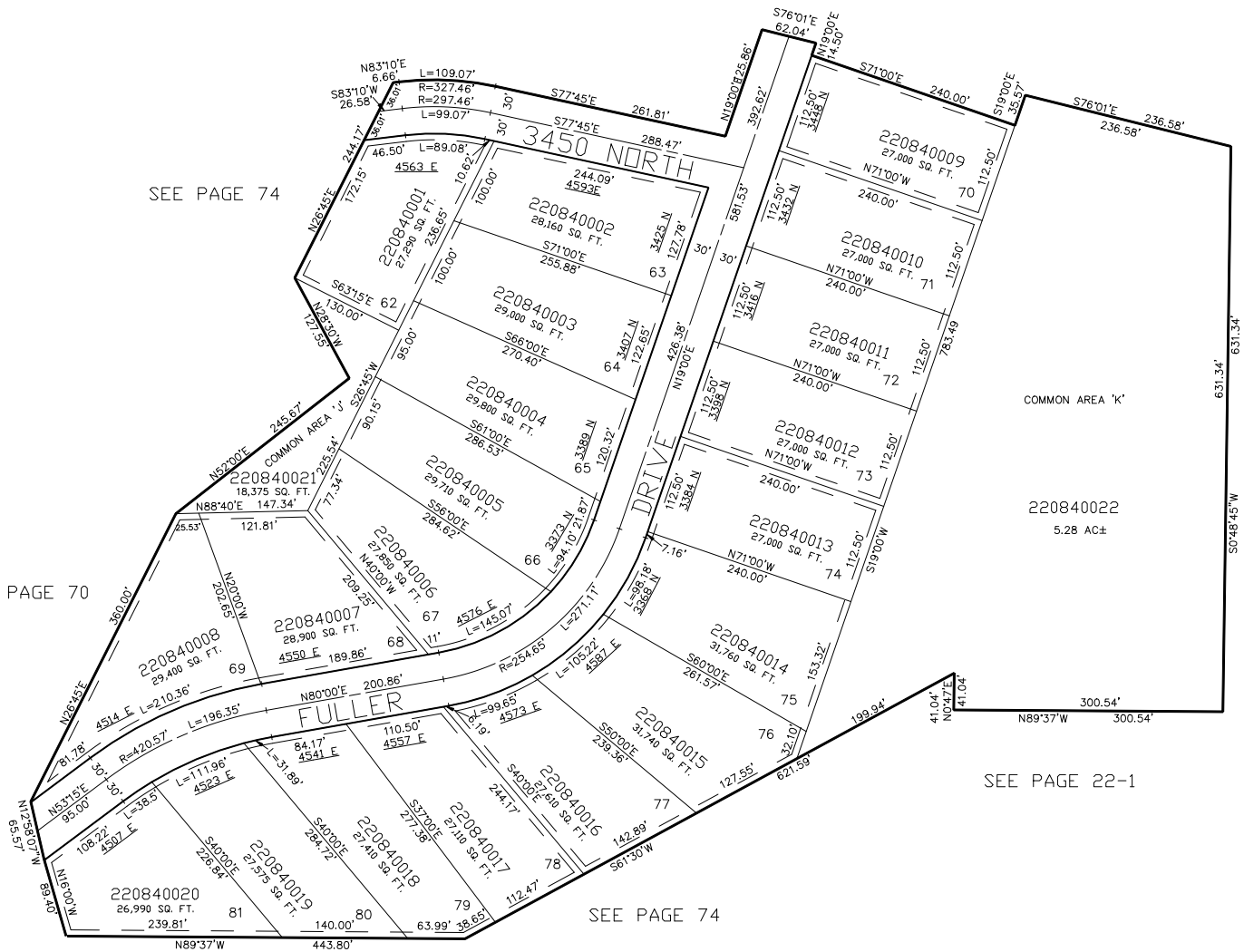
SEE PAGE 74

SEE PAGE 70

SEE PAGE 21-2

SEE PAGE 22-1

SEE PAGE 74



7' UTILITY & DRAINAGE EASEMENTS EACH
SIDE OF PROPERTY LINES AS INDICATED
BY DASHED LINES EXCEPT AS OTHERWISE
SHOWN.

FOR COMPLETE ENG DATA SEE
ORIGINAL DEDICATION PLAT IN
BOOK 23, PAGE 63 OF RECORDS.